
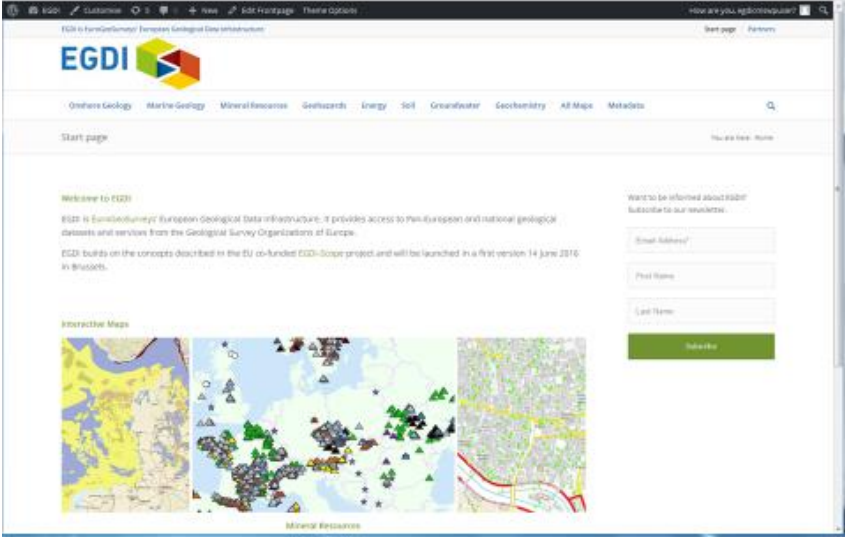


Statement - GEO-IV Plenary

<p>Member Government or Participating Organization</p>	<p>EuroGeoSurveys</p>
<p>Country Flag or Participating Organization logo</p>	
<p>Twitter account</p>	<p>https://twitter.com/EuroGeoSurveys</p>
<p>GEO Principal title, organization</p>	<p>Slavko Solar, Secretary General</p>
<p>The European Geological Data Infrastructure (EGDI) is now a reality. Data from 13 projects and from thousands of national datasets are already available in a common platform with more than 600 data layers, covering Energy, Groundwater, Mineral Resources, Geohazards and Soils.</p>	 <p>http://www.egdi-scope.eu/</p>

Minerals4EU is the most comprehensive source of minerals statistics for Europe. It presents, for the first time, official national level statistical data for 40 European countries, including all European Union (EU) Member States, countries in accession and potential candidates, as well as European Free Trade Association (EFTA) members. All the data is accessible digitally only, through the European Minerals Knowledge Data Platform.

<http://minerals4eu.brgm-rec.fr/>

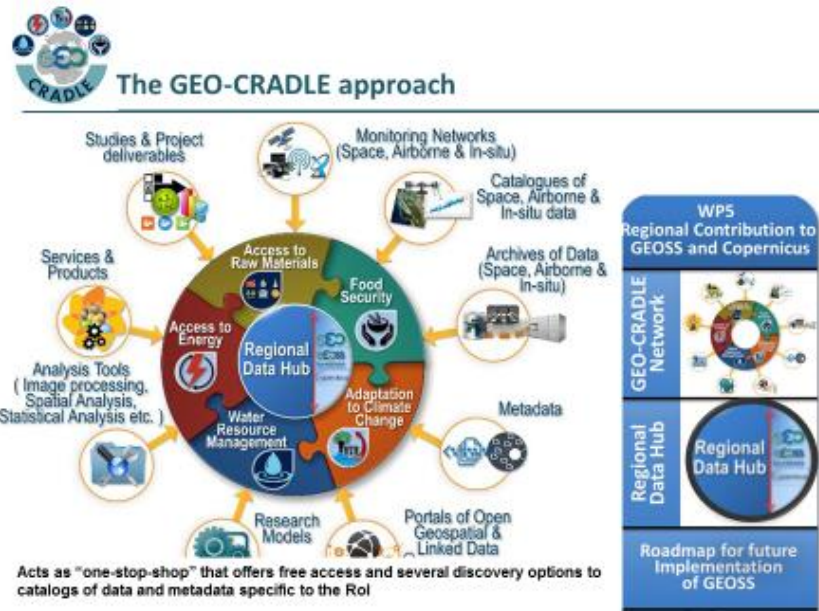
Since 2009, EuroGeoSurveys has provided marine geoscience information to the European Commission's European Marine Observation and Data Network (EMODnet). Of the 36 organisations involved in EMODnet-Geology, 23 are national Geological Surveys, whose marine departments are today at the centre of providing geological advice and information to the European Commission.

<http://portal.onegeology.org/OnegeologyGlobal/>

The GEO-CRADLE
(Coordinating and IntegRating state-of-the-art Earth

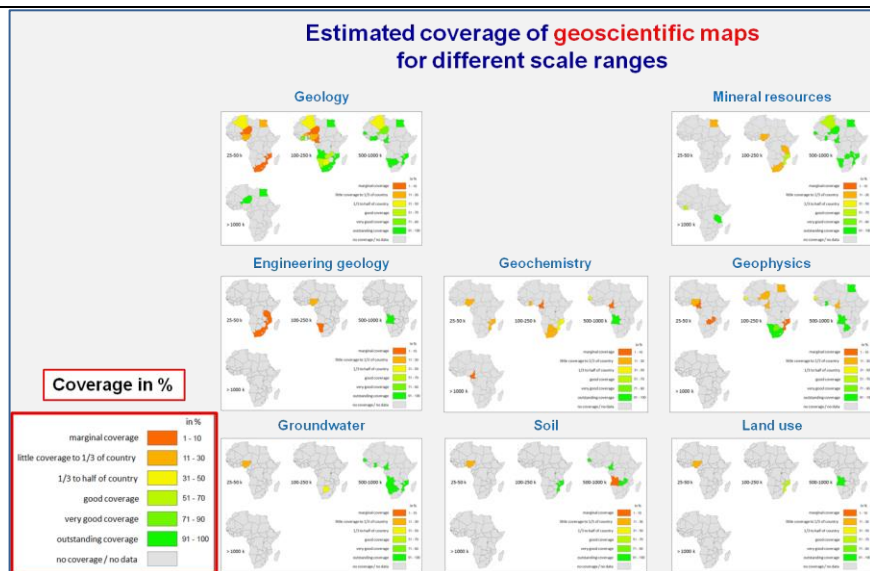
Observation Activities in the regions of North Africa, Middle East, and Balkans and Developing Links with GEO related initiatives towards GEOSS) project aims to enhance the current knowledge of existing EO capacities in the region.

EuroGeoSurveys' role is to assist in providing better access to raw materials in North Africa, Middle East, and Balkans.



<http://geocradle.eu/en/>

PanAfGeo focuses on the areas of geoscientific mapping, mineral resources assessment, artisanal and small-scale mining, environmental management of mines, geohazards, geoheritage and geoinformation management. In those areas, PanAfGeo aims to establish long-term strategic cooperation relationships and will achieve this in a sustainable way by investing in human capital, through dedicated high-quality training. The success of PanAfGeo is based on, never before seen, exceptional collaboration, between 54 OAGS African and the 36 EGS member countries for the sustainable strengthening of African countries' geological administrations.



<http://panafgeo.org/>

The EGS Annual Report on landslides is a new initiative of the Earth Observation and GeoHazards Expert Group (EOEG). It will provide statistics regarding landslides in Europe, spatial distribution, triggering events, types of landslides, number of injuries and fatalities. This information is important for policy makers as it will help them in better understanding these processes and quantify and mitigate the consequences.

